

### Applications

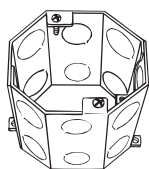
- Concrete rings are used with poured deck (floor) in high-rise construction
- These boxes are installed on wooden or steel concrete forms. After the forms are removed, the box is flush with the concrete
- RACO® Ceiling Fan Concrete Ring 284 is listed for support of ceiling fans

### Product Features

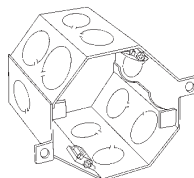
- Flat sides provide excellent contact for locknuts
- External ears are used to nail the ring to the wood form
- The top cover is removable for before-pour work
- Ears on inside of box are for fixtures
- Waxed fixture ears prevent concrete from interfering with the threads
- Variety of cover plates are available
- Cover plate must be ordered separately with all (except 280 which includes a 891 cover) RACO® concrete rings

### Compliance

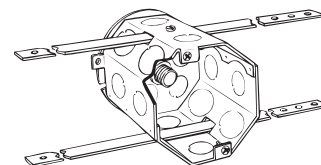
-  – File E195978



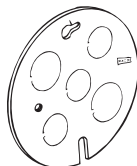
273, 274, 275,  
276, 279



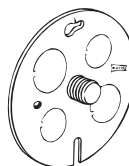
284  
GORILLA-RING™



\*280 SHOWN  
WITH 918 BARS



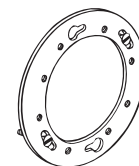
890



891



892



893

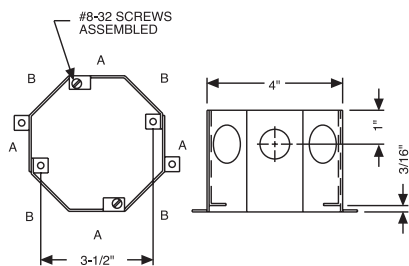
### ORDERING INFORMATION - DIMENSIONS

| CONCRETE RINGS |        |             |               |         |           |              |                                |                       |
|----------------|--------|-------------|---------------|---------|-----------|--------------|--------------------------------|-----------------------|
| CATALOG NUMBER | DEPTH  | KO SIZES    | NO. ROWS KO's | CU. IN. | STD. PKG. | UPC BAR CODE | MAX. RECOMMENDED SUPPORT LOADS |                       |
|                |        |             |               |         |           |              | CEILING FAN (DYNAMIC) LBS.     | FIXTURE (STATIC) LBS. |
| 270RAC         | 2"     | 1/2" & 3/4" | Single        | 24.5    | 25        | —            | No                             | 50                    |
| 271            | 2-1/2" | 1/2" & 3/4" | Single        | 30.8    | 25        | —            | No                             | 50                    |
| 272            | 3"     | 1/2" & 3/4" | Single        | 37.0    | 25        | —            | No                             | 50                    |
| 277            | 3"     | 3/4" & 1"   | Single        | 37.0    | 25        | —            | No                             | 50                    |
| 273            | 3-1/2" | 1/2" & 3/4" | Double        | 43.0    | 20        | —            | No                             | 50                    |
| 278            | 3-1/2" | 3/4" & 1"   | Single        | 43.0    | 20        | —            | No                             | 50                    |
| 274            | 4"     | 1/2" & 3/4" | Double        | 49.3    | 20        | —            | No                             | 50                    |
| 279            | 4"     | 3/4" & 1"   | Double        | 49.3    | 20        | —            | No                             | 50                    |
| 275            | 5"     | 1/2" & 3/4" | Double        | 61.5    | 10        | —            | No                             | 50                    |
| 276            | 6"     | 1/2" & 3/4" | Double        | 74.0    | 10        | —            | No                             | 50                    |
| 284            | 4"     | 1/2" & 3/4" | Double        | 49.3    | 6         | —            | 35                             | 75                    |

| HUNG CEILING BOX - 3-1/2" DEEP |                                    |         |           |              |
|--------------------------------|------------------------------------|---------|-----------|--------------|
| CATALOG NUMBER                 | DESCRIPTION                        | CU. IN. | STD. PKG. | UPC BAR CODE |
| 280                            | 3/8" Stud, 8-1/2", 8-3/4" KO's*    | 43.0    | 20        | —            |
| 918                            | 30" Long bars for hung ceiling box | —       | 40        | —            |

\*Order bars separately

### STEEL CONCRETE RINGS



| CONCRETE RING - BACK PLATES/COVERS AND ADAPTER RING |   |                |            |           |              |
|---|---|----------------|------------|-----------|--------------|
| CATALOG NUMBER                                      | DESCRIPTION   | KNOCKOUTS      | O.D. DIAM. | STD. PKG. | UPC BAR CODE |
| 890   | —   | 3-1/2", 2-3/4" | 4-1/2"     | 25        | —            |
| 891   | 3/8" Stud   | 2-1/2", 2-3/4" | 4-1/2"     | 25        | —            |
| 892   | Flat, blank   | —              | 4-1/2"     | 25        | —            |
| 893   | Joins Oct. Ext. ring to concrete ring<br>Includes two retained screws | —              | 4-1/2"     | 50        | —            |

| KNOCKOUT LOCATIONS |      |      |
|--------------------|------|------|
| KNOCKOUT SIZE      | A    | B    |
| 1/2" and 3/4" KOs  | 1/2" | 3/4" |
| 3/4" and 1" KOs    | 3/4" | 1"   |