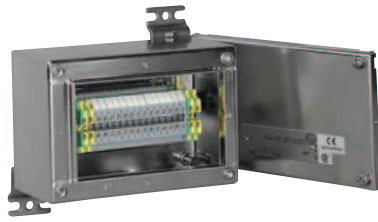


**TEF/TEB SERIES • TERMINAL ENCLOSURES
FOR POWER AND CONTROL CIRCUITS**



**FRP Enclosure
Size 08**



**Stainless Steel Enclosure
Size 06**



**Stainless Steel Enclosure
Size 09**

**Class I, Div. 2, Groups A,B,C,D
Class I, Zones 1 & 2, Groups IIC, IIB, IIA
Class II, Div. 1 & 2, Groups E,F,G[Ⓢ]
Class III
NEMA 3, 4, 4X
(A) Ex e II T6 IP66***



Requires factory assembly

** Dependent on cable entry connector types*

TECHNeTERM[®]

Applications

- Hazardous and corrosive environments such as refineries, chemical plants, water treatment and bio gas plants, and wherever a combustible gas-air mixture or combustible dust may occur
- Used to link electrical wires. Primary circuit brought into the enclosure is distributed to field control devices or sensors
- TECHNeTERM Series for power and control circuits
- TECHNiTERM Series for intrinsically safe circuits is available upon request. Includes blue colored DIN rail line-up terminals

Features

- Pre-configured enclosures with DIN rail mounted terminals installed eliminates time consuming engineering and sourcing
- Enclosures are available in Fiber-glass Reinforced Polyester or 316 electro-polished Stainless Steel
- Weidmuller or Phoenix increased safety 600 volt rated DIN rail line-up terminals
- Factory installed conduit openings, cable glands, flange (bonding) plates and hinges are available upon request.

Dimensions

See page E5 for FRP and page E6 for steel enclosures.

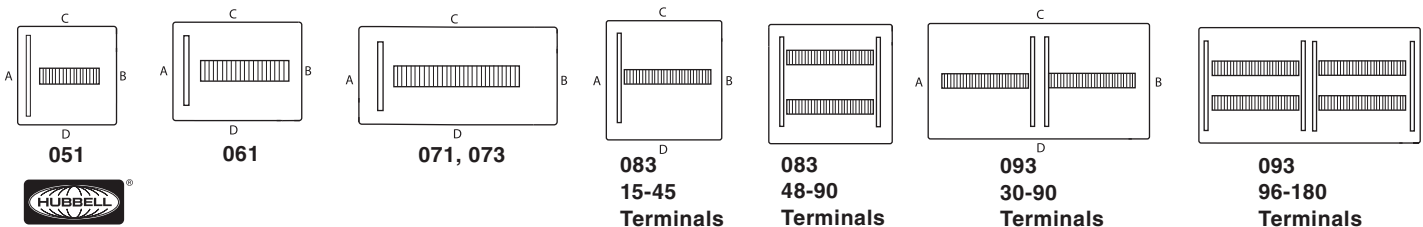
FEATURES-SPECIFICATIONS

TEF/TEB ENCLOSURES WITH WEIDMÜLLER TERMINALS

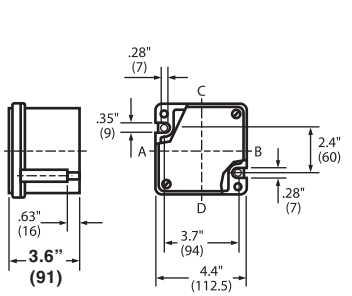
TERMINAL QTY.	WIRE RANGE AWG	TERMINAL SIZE MM2	GROUND WIRE CONNECTIONS	CATALOG NUMBER POWER AND CONTROL CIRCUITS	
				FRP	STAINLESS STEEL
18	22-12	2.5	14	TEF051DW12018	TEB051DW12018
15	22-10	4	14	TEF051DW10015	TEB051DW10015
9	20-8	10	12	TEF051DW08009	TEB051DW08009
24	22-12	2.5	14	TEF061DW12024	TEB061DW12024
21	22-10	4	14	TEF061DW10021	TEB061DW10021
12	20-8	10	12	TEF061DW08012	TEB061DW08012
45	22-12	2.5	14	TEF071DW12045	TEB071DW12045
36	22-10	4	14	TEF071DW10036	TEB071DW10036
24	20-8	10	12	TEF071DW08024	TEB071DW08024
45	22-12	2.5	14	TEF073DW12045	TEB073DW12045
36	22-10	4	14	TEF073DW10036	TEB073DW10036
24	20-8	10	12	TEF073DW08024	TEB073DW08024
18	14-6	16	12	TEF073DW06018	TEB073DW06018
45	22-12	2.5	36	TEF083DW12045	TEB083DW12045
36	22-10	4	36	TEF083DW10036	TEB083DW10036
24	20-8	10	24	TEF083DW08024	TEB083DW08024
18	14-6	16	24	TEF083DW06018	TEB083DW06018
12	12-2	35	24	TEF083DW02012	TEB083DW02012
90	22-12	2.5	72	TEF083DW12090	TEB083DW12090
72	22-10	4	72	TEF083DW10072	TEB083DW10072
48	20-8	10	48	TEF083DW08048	TEB083DW08048
90	22-12	2.5	72	TEF093DW12090	TEB093DW12090
72	22-10	4	72	TEF093DW10072	TEB093DW10072
48	20-8	10	48	TEF093DW08048	TEB093DW08048
36	14-6	16	48	TEF093DW06036	TEB093DW06036
24	12-2	35	48	TEF093DW02024	TEB093DW02024
180	22-12	2.5	144	TEF093DW12180	TEB093DW12180
144	22-10	4	144	TEF093DW10144	TEB093DW10144
96	20-8	10	96	TEF093DW08096	TEB093DW08096

For Phoenix Type UK Terminals—Change Bold "W" to "P".
 Ⓢ CSA Certified for Class II, Div. 1&2, EFG. UL Listed for Class II, Div. 2, FG.

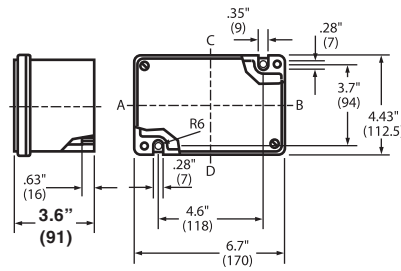
Terminal Layout



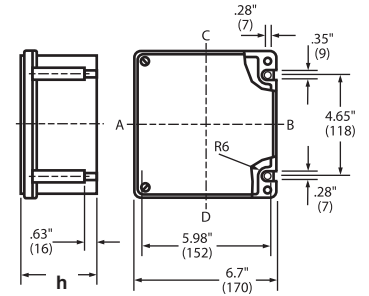
KILLARK[®]



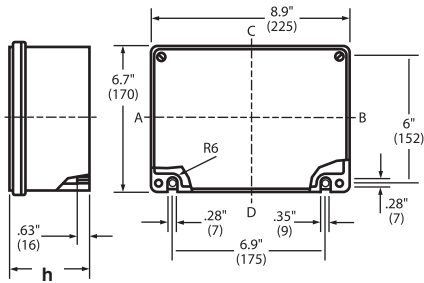
Size 03



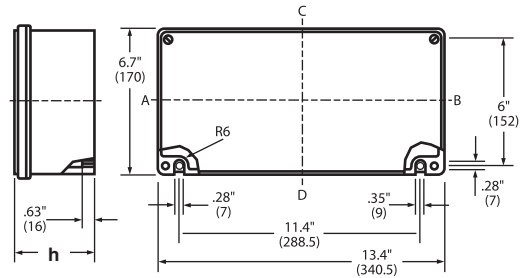
Size 04



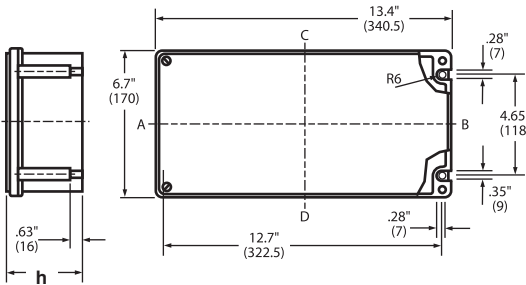
Size 05



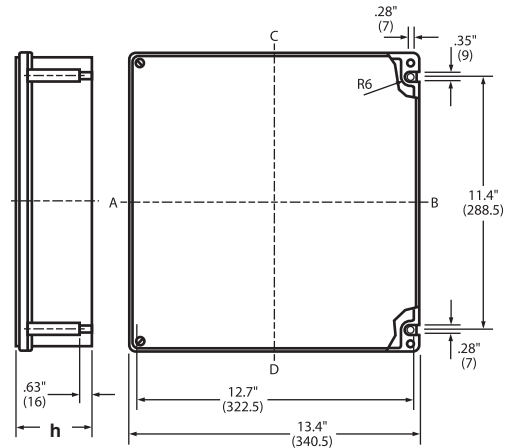
Size 06



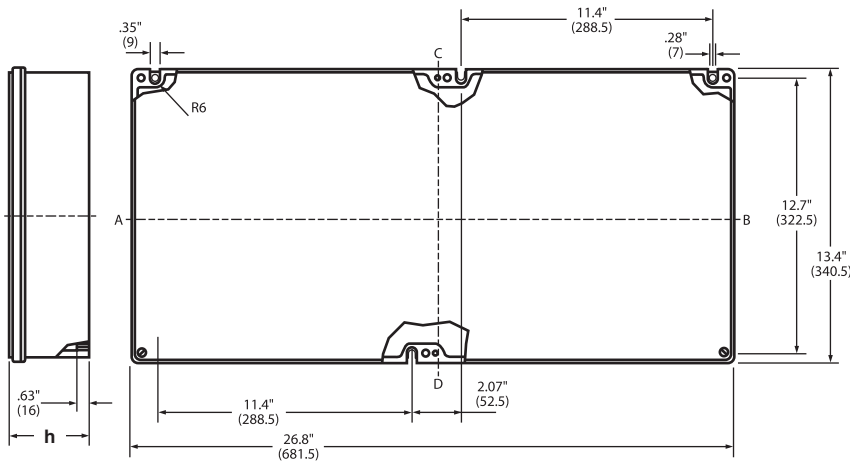
Size 07



Size S7



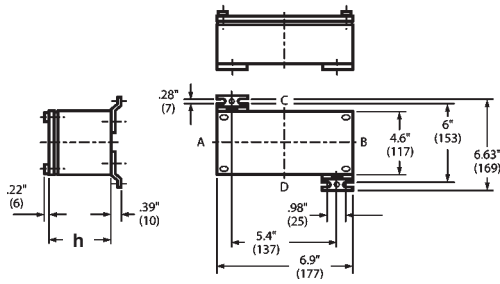
Size 08



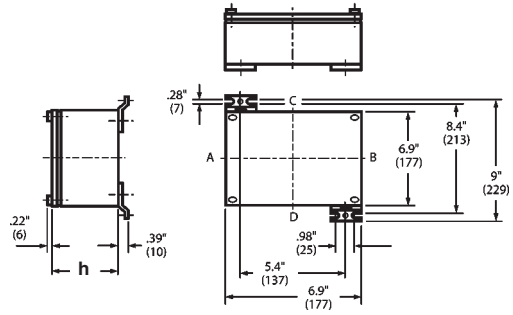
Size 09

AVAILABLE ENCLOSURE DEPTHS						
DEPTH CODE (h)	1	2*	3	4*	5*	6*
ENCLOSURE SIZE	3.6" (91)	5.2" (131)	5.9" (150)	6.7" (171)	7.5" (190)	9" (230)
03	x	—	—	—	—	—
04	x	—	—	—	—	—
05	x	x	—	—	—	—
06	x	x	—	—	—	—
07	x	x	x	—	x	—
S7	x	—	x	—	—	—
08	x	x	x	x	x	x
09	x	x	x	—	x	—

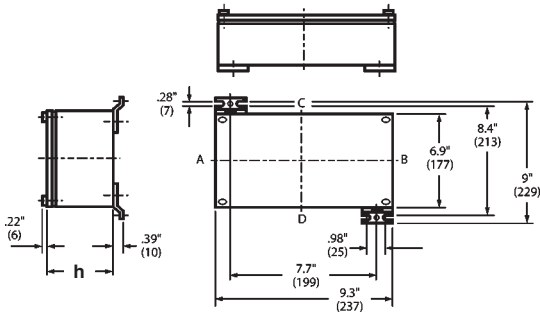
*Depth increase due to use of deep style cover



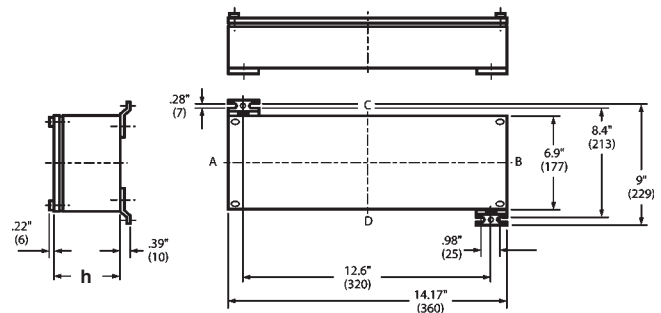
Size 04



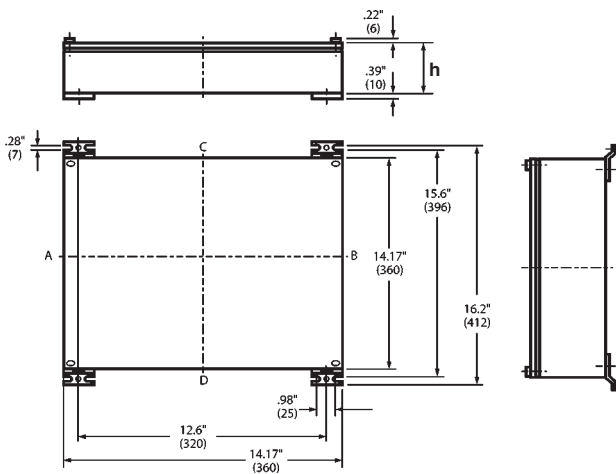
Size 05



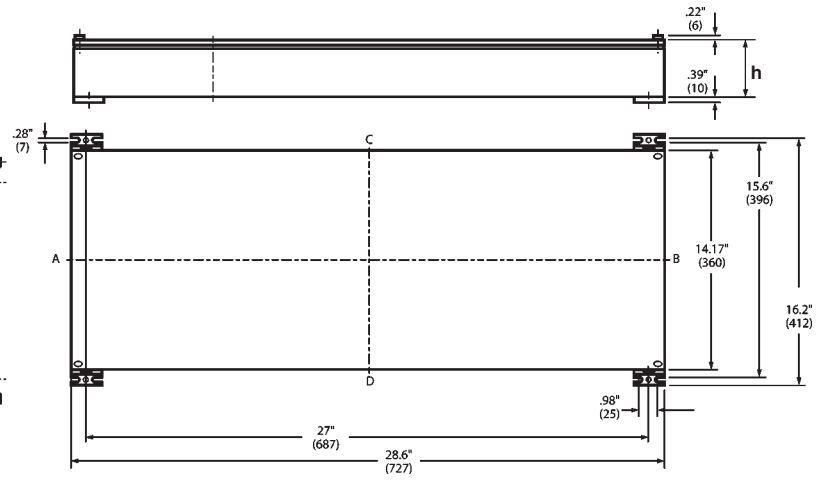
Size 06



Size 07



Size 08



Size 09

AVAILABLE ENCLOSURE DEPTHS				
DEPTH CODE (h)	1	3	5	6
ENCLOSURE SIZE	3.6" (91)	5.9" (150)	7.5" (190)	9" (230)
04	x	—	—	—
05	x	—	—	—
06	x	x	—	—
07	x	x	—	—
08	x	x	x	x
09	x	x	x	—