

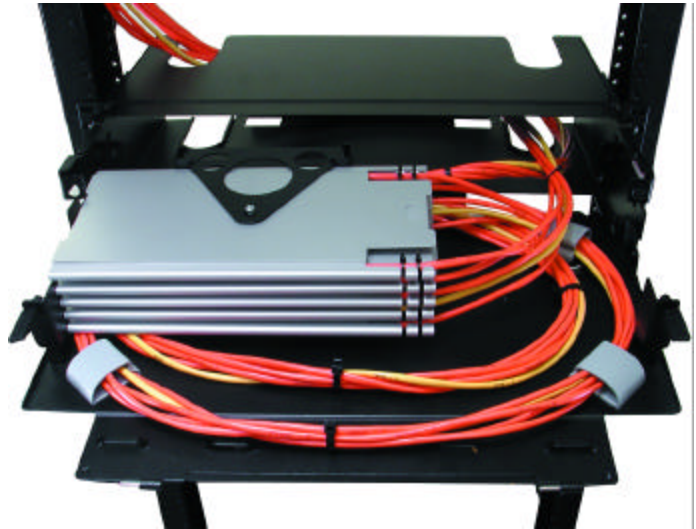
Optical Fiber Splicing Systems

Hubbell's Optical Fiber splice enclosure, splice shelf and splicing trays provide a complete network interconnection solution for splicing pig-tails to outside plant fiber optic cable.

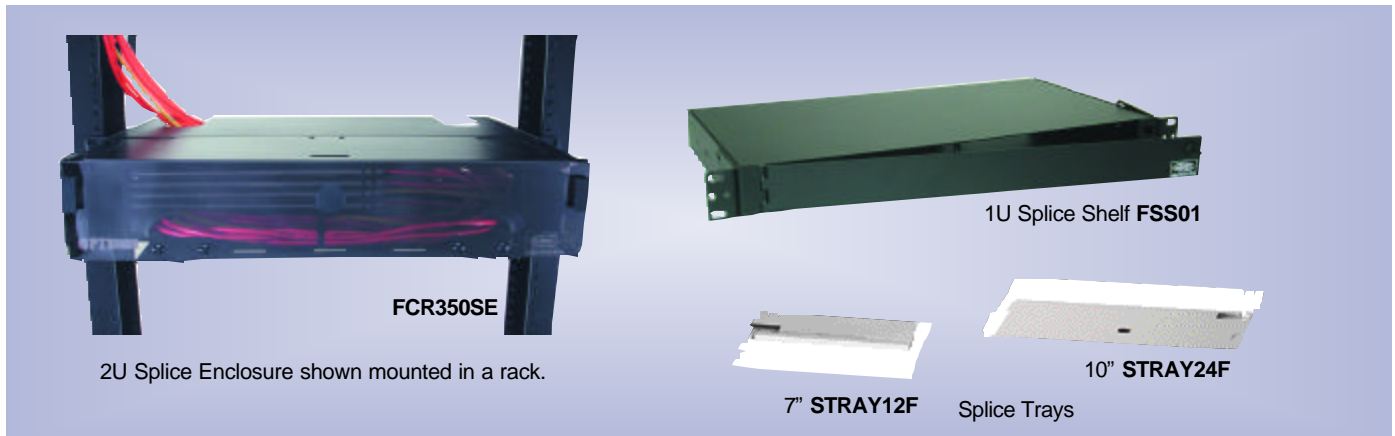
The 2 rack unit FCR350SE is designed for superior splice tray accessibility. The knockouts, on the top and bottom of the enclosure, allow internal mounting of pigtailed cables between stacked enclosures. The FCR350SE also makes a great enclosure to store cable and patch cord slack. It accommodates up to six 7" or 10" splice trays for a total capacity of 144 splices.

The low-profile FSS01 splice shelf occupies one rack unit and has a swing-out drawer for easy access to the splice trays, assuring the fiber minimum bend radius is not exceeded. The FSS01 will accommodate up to two 7" or 10" stackable fusion or mechanical splice trays for a total splice capacity of 48 fibers. Both the FSS01 and the FCR350SE are available complete with all of the cable routing installation and labeling hardware.

Hubbell's STRAY series of splice trays are constructed of a high quality brushed aluminum and are designed to support either fusion or mechanical splices. These trays have the capacity to hold up to 24 fiber splices in a soft rubber cradle, mounted inside the tray, for neat and efficient splice organization. A flange on the inside of the tray allows the fiber service loop buffers to be organized quickly and easily. The trays are designed for "butt splice" installation, allowing a sufficient service loop to extend the tray to the splicing equipment.



FCR350SE splice enclosure shown with splice trays installed on the building cable. Splice trays sold separately.



2U Splice Enclosure shown mounted in a rack.

1U Splice Shelf **FSS01**

7" **STRAY12F**

Splice Trays

10" **STRAY24F**

FEATURES

- Butt splice installation
- Stackable splice trays
- Splice tray holder included (FCR350SE)
- Slide-out shelf (FCR350SE)
- Internal routing to top and bottom enclosures (FCR350SE)
- Low-profile splice shelf (FSS01)
- Swing-out splice shelf (FSS01)

BENEFITS

- Easy access to fusion splicers and splicing equipment
- Splice capacity expansion
- Neat and consistent splice tray organization and access
- Easy access to splices and building cables
- Pigtail protection and capacity expansion
- Conservation of rack space
- Fiber bend radius protection

ORDER INFORMATION

FCR Splice Enclosure - Slide-out shelf designed for easy installation and access to cables and splices. This panel holds up to six 7" or 10" splice trays.

Accepts	Dimensions	Rack Units	Catalog No.
Up to 6 splice trays	3.50"H x 17"W x 11"D	2	FCR350SE

Splice Shelf Panel - Hinged, swing-out fiber drawer designed for easy installation and access to cables and splices. The swing-out feature protects the fiber bend radius as well as providing a convenient work surface during splicing.

Accepts	Dimensions	Rack Units	Catalog No.
Up to 2 splice trays	1.75"H x 17"W x 11"D	1	FSS01

Splice Trays - The top of the tray snaps on for easy installation and field maintenance. The trays can be stacked in cabinets to provide additional splice capacity.

Description	Dimensions	Length	Catalog No.
24 Fiber, Fusion	0.39" x 5.1"	10" (254)	STRAY24F
24 Fiber, Mechanical	0.39" x 5.1"	10" (254)	STRAY24M
12 Fiber, Fusion	0.39" x 5.1"	7" (178)	STRAY12F
12 Fiber, Mechanical	0.39" x 5.1"	7" (178)	STRAY12M

SPECIFICATIONS

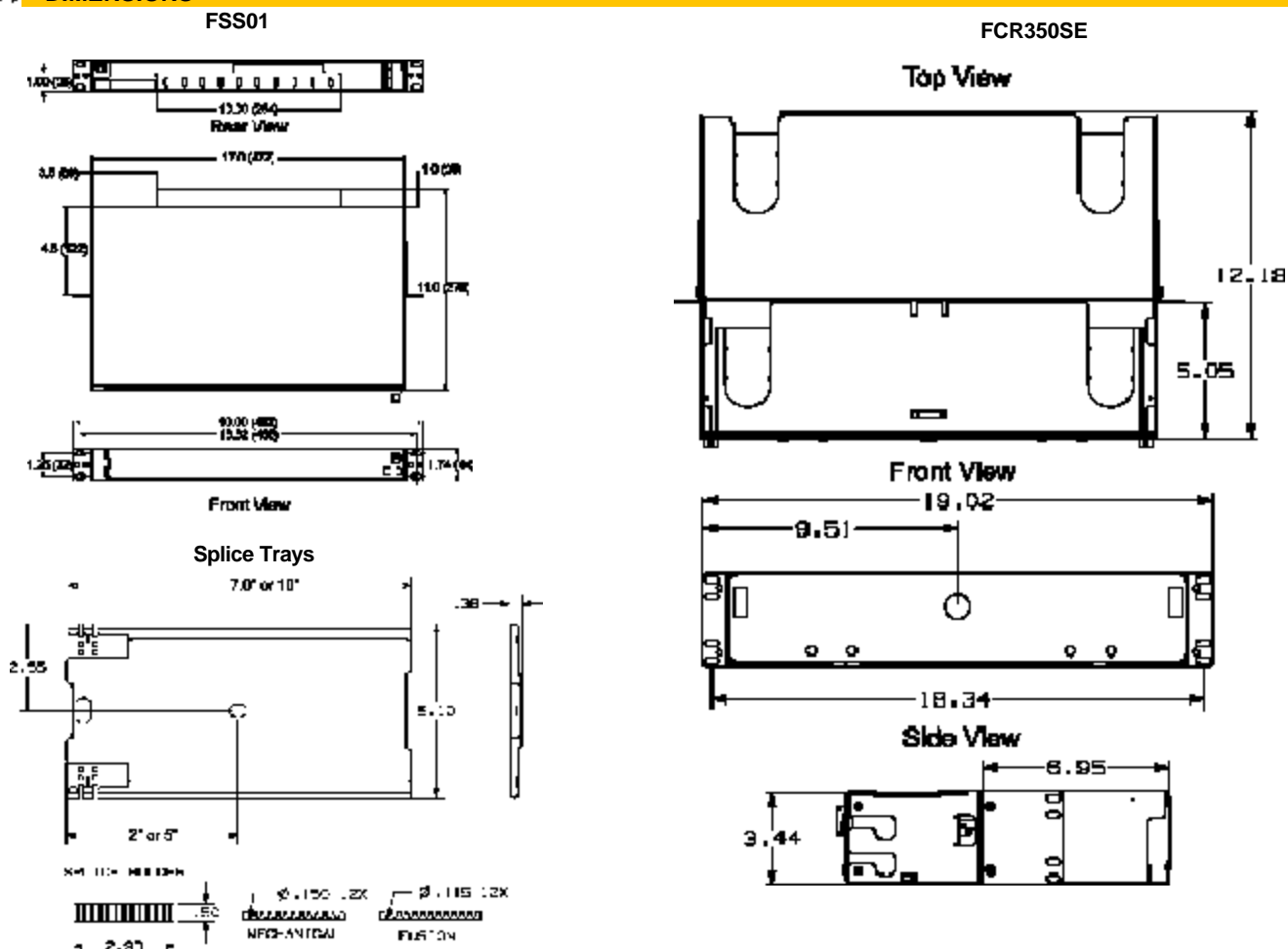
FSS01 Splice Shelf Panel and FCR350SE Splice Enclosure

- Material: 16 ga. cold rolled steel
- Finish: Black electrostatically coated powder paint
- Includes hardware necessary for labeling, rack mounting and fiber/cable management
- Mounting brackets may be repositioned to allow extended or flush mounting in both 19" or 23" equipment racks

Splice Trays

- Material: anodized aluminum per Mil Spec. A-8625-C
- Complete with cable ties and splice cradle (mechanical splices and fusion splice protection sleeves not included)

DIMENSIONS



Hubbell Premise Wiring

HUBBELL INCORPORATED (Delaware)
 14 Lord's Hill Road • Stonington, CT 06378-0901 • (860) 535-8326 • 800-626-0005
 Fax: (860) 535-8328 • Internet site: <http://www.hubbell-premise.com>

Worldwide Locations

Hubbell Premise Wiring, Asia Pacific	852-2836-7131	Fax: 852-2836-7132	Hubbell de Mexico, S.A. de C.V.	52-5-559-5304	Fax: 52-5-559-5885
Hubbell Canada Inc.	905-839-1138	Fax: 905-839-9108	Hubbell Premise Wiring, Middle East	971-4-393-4192	Fax: 971-4-393-4194
Hubbell Premise Wiring, China	86-21-6217-3478	Fax: 86-21-6217-3481	Hubbell Premise Wiring, Puerto Rico	787-720-7185	Fax: 787-789-2796
Hubbell Premise Wiring, Europe	44-(0)1234-848550	Fax: 44-(0)1234-856190	Hubbell-Taian Co., Ltd., Taiwan	886-2-(0)2515-0855	Fax: 886-2-(0)2515-0899
Hubbell Int'l. Inc., Korea Branch	82-2-(0)2607-1363	Fax: 82-2-(0)2603-7386	Hubbell Incorporated, Turkey	90-216-414-8147	Fax: 90-216-414-8148
Hubbell Premise Wiring, Latin America	305-251-4236	Fax: 305-251-4087	Hubbell Premise Wiring, Venezuela	58-16-6807453	Fax: 58-281-2820323