

FCW Optical Fiber Wall Mount Cabinets

Modular, 2-Door



The OPTIchannel 2-door FCW series are designed for applications that require interconnections, cable management and routing of fiber in a secure environment. These cabinets come equipped with a lock on the installer-side to prevent unauthorized access to terminations. The user-side features a knock-out for an optional FLOCK 2 lock set.

Cable entry ports are aligned on the top and bottom of each cabinet. This allows stackable mounting, so cables can be easily run from one cabinet to the next.

FCW series cabinets are available in two sizes. Adapter Panels are sold separately.

The **FCW4SP** cabinet provides for a maximum of 4 FSP series adapter panels. It is supplied with all hardware necessary to route the fibers and secure cables.

The **FCW12SP** cabinet provides for a maximum of 12 FSP series adapter panels. It is supplied with all the hardware necessary to route the fibers and secure cables.

A mounting stud is also provided with the cabinet for mounting a splice tray on the back wall of the cabinet if required. Our STRAY, mechanical or fusion splice trays, are sold separately.

FEATURES	BENEFITS
■ Separate, lockable user and installer-side compartments	➤ Security from tampering
■ Cable entry ports designed for stackable wall mounting	➤ Additional capacity as desired
■ Accepts mechanical or fusion splice trays	➤ Allows splicing of pigtails
■ Port capacity: 4 or 12 FSP Adapter Panels	➤ Flexibility for a wide variety of applications
■ HPW Label System compatible	➤ Allows for enhanced label identification

ORDER INFORMATION

FCW Double Door Wall Mount Cabinets*

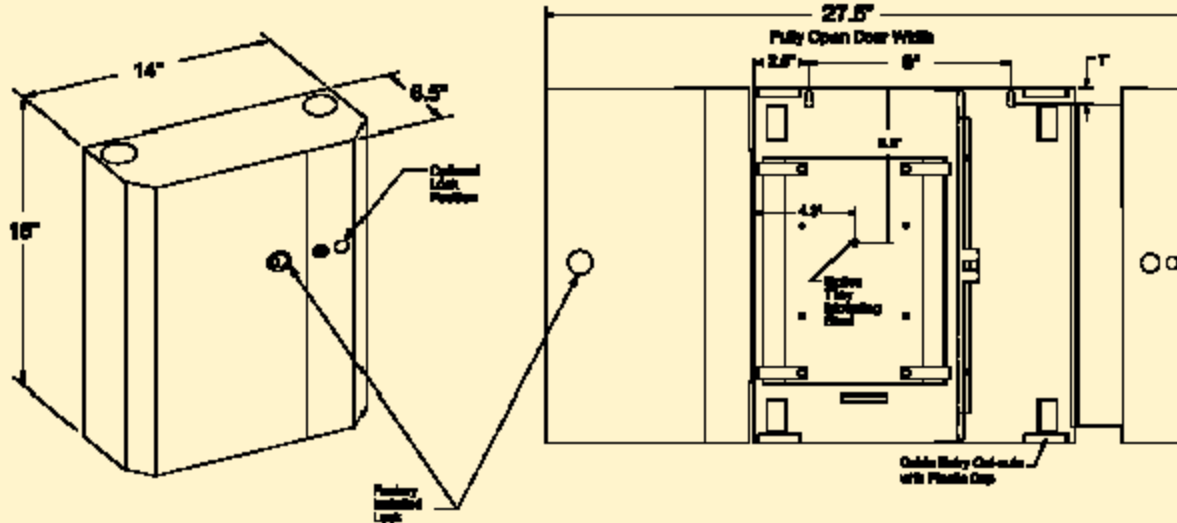
Accepts	Height	Width	Depth	Catalog No.
4 FSP Adapter panels	12" (305)	14" (356)	3.25" (83)	FCW4SP
12 FSP Adapter panels	16" (406)	6.50" (165)	FCW12SP	
Lock Kit - For user-side (sold separately)				FLOCK2

* Supplied with **FLOCK1** only on technician's side.

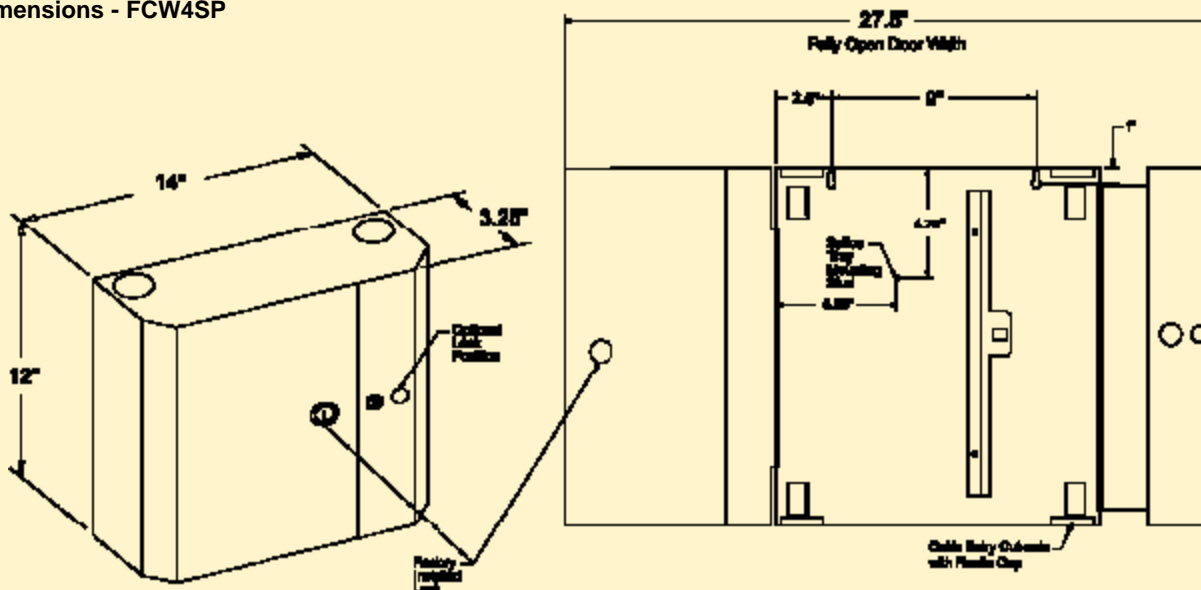
SPECIFICATIONS

- ◆ 16 ga. cold rolled steel construction
- ◆ Durable black powder coat finish
- ◆ Weight (unloaded) - FCW4SP: 12 lbs. FCW12SP: 21 lbs.
- ◆ The FCW4SP accepts a maximum of two 7" splice trays (one 7" tray with high-density adapter panels installed)
- ◆ The FCW12SP accepts a maximum of four 10" splice trays

Dimensions - FCW12SP



Dimensions - FCW4SP



Hubbell Premise Wiring
HUBBELL INCORPORATED (Delaware)
 14 Lord's Hill Road • Stonington, CT 06378-0901 • (860) 535-8326 • 800-626-0005
 Fax: (860) 535-8328 • Internet site: <http://www.hubbell-premise.com>

Worldwide Locations

Hubbell Premise Wiring, Asia Pacific	852-2836-7131	Fax: 852-2836-7132	Hubbell de Mexico, S.A. de C.V.	52-5-559-5304	Fax: 52-5-559-5885
Hubbell Canada Inc.	905-839-1138	Fax: 905-839-9108	Hubbell Premise Wiring, Middle East	971-4-393-4192	Fax: 971-4-393-4194
Hubbell Premise Wiring, China	86-21-6217-3478	Fax: 86-21-6217-3481	Hubbell Premise Wiring, Puerto Rico	787-720-7185	Fax: 787-789-2796
Hubbell Premise Wiring, Europe	44-(0)1234-848550	Fax: 44-(0)1234-856190	Hubbell-Taian Co., Ltd., Taiwan	886-2-(0)2515-0855	Fax: 886-2-(0)2515-0899
Hubbell Int'l. Inc., Korea Branch	82-2-(0)2607-1363	Fax: 82-2-(0)2603-7386	Hubbell Incorporated, Turkey	90-216-414-8147	Fax: 90-216-414-8148
Hubbell Premise Wiring, Latin America	305-251-4236	Fax: 305-251-4087	Hubbell Premise Wiring, Venezuela	58-16-6807453	Fax: 58-281-2820323